

OUR DESIGN PARTNERS



Christopher Seymour Designs

Christopher Seymour is an exciting prospect in the superyacht exterior design realm and great things are predicted of his visionary work. With a creative flare that excites those with a passion for the sea, his concepts are set to turn heads around the globe.

“We want to create something magnificent, respected and admired for what the vessels are, not because of who owns, built or designed them, but on their own merits,” says Seymour.



Guido de Groot Design

Guido’s love affair with yachts began back in 1986 when he saw the fourth “Highlander” close to completion. Awestruck by the majesty of this 45-metre masterpiece, he started drawing yachts in parallel with his professional career in car design at the PSA Group (Citroen).

Since those days, Guido de Groot’s design office has expanded, to the point that it works with an international clientele and collaborating with yards building yachts in Italy, The Netherlands, Taiwan, China, Russia and Turkey.

The company not only works on yacht interiors, but many of the projects combine interior and exterior design.

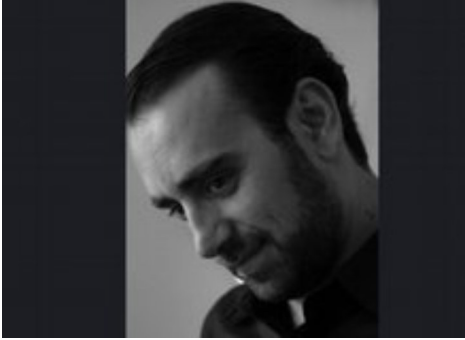


Evan K Marshall

Evan Marshall moved to London from New York City in 1990 to pursue his dream of becoming an internationally versed yacht designer. Having started his professional career in the mid-80s at Sparkman Stephens in New York City, Marshall soon began to feel that European design philosophy and approaches held more interest for him.

Following three years of working for a European yacht design office in 1993 he established the design office Evan K Marshall and hasn’t looked back since then.

In a career that is now spanned more than 25 years Marshall has focused on his work efforts on yacht interior and exterior designs, as well as residential project. The company has established a unique reputation by embracing a variety of styles and tastes of which the office continues to pursue as they take on new design challenges.



Theodoros Fotiadis

Designing or just sketching has been what I always have been doing on daily bases, starting drawing on tables, desks and my books since the age of 6.

Since then I have worked on numerous projects, both Marine as well as Residential. and our portfolio kept growing year after year.

TF Design nowadays supplies a variety of discerning clients, and supports other designer and architects with visualisations and partially design consolation.

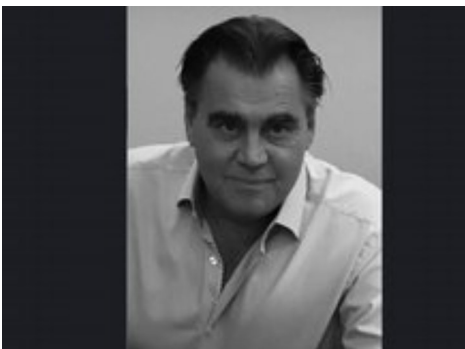


Sorin Vega

After following studies as a pianist in combination with legal and economic education, Sorin completed his studies as a professional designer. Beginning his practical experience as a furniture designer, Sorin began creating interior design for luxury apartments, restaurants and shops.

About 10 years ago he decided to concentrate his skills more and more on the interiors of luxury yachts, and since then Sorin Vega has contributed to the creation of many beautiful interiors with a number of renowned Italian shipyards, and collaboration with architects and designer.

The creations of the Sorin Vega Designs are famous in the yachting industry and thanks to its futuristic vision, its incredible abilities are certainly to be taken into consideration in the future yacht creations.



Carl Esch

Managing director Carl Esch has been active in the yachting industry since the early Eighties.

He has gathered his long time expertise by running his own yacht sales & distribution companies, shipyards, as well as being involved in many new yacht development and construction projects.